



Antelope Horn

Newsletter of the Kern-Antelope Historical Society, Inc.
Member of the Conference of California Historical Societies
February, 2024

Meetings:

Regular Meetings:

- 2nd Thursday of the month (except July, August); 5:30 pm.
- Rosamond Public Library -
3611 Rosamond Blvd, Rosamond, CA

Board Meetings:

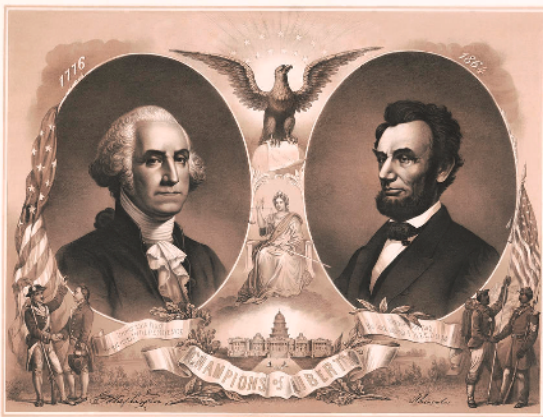
- 4th Thursday of the month as needed;
4 pm; all are welcome, email for
directions to location.

Hello to all our Kern Antelope Historical Society Members and Friends.

- ❖ **What: Regular Meeting**
- ❖ **When: Thursday, February 8th (2nd Thursday)**
- ❖ **Time: 5:30 pm**
- ❖ **Where: Rosamond Public Library, Rosamond, CA**
- ❖ **Speaker: Bob Alvis - Southern Pacific RR from Boron to Mojave**

WEBSITE: www.kahs1959.org **EMAIL:** info@kahs1959.org
FACEBOOK: www.facebook.com/KAHS1959/

*This month we honor two of our
greatest presidents -
George Washington and Abraham Lincoln!*



*The Kern Antelope Historical Society is pleased to welcome you to our **February 8th meeting with local collector of history - Bob Alvis!** Bob was born in the Antelope Valley and cares greatly about preserving the history and culture of our area. Maybe you have followed his posts on Facebook where he shares much about the history of the Antelope Valley. Bob travels throughout the valley, and beyond, and is always on the lookout for things of local historical interest. Whether he sees an old building or a culvert with a date on it, or an abandoned railroad bed, he stops and investigates. Some of his recent articles have been about the Antelope Valley Indian Museum, the old Joshua tree which grew in the middle of Ave K, near 60th St West (but no longer there), St. Mary's church in Rosamond which was originally at Muroc during World War II, and many other things that bring back good memories or inform us of things we never knew. Read about his topic for our meeting below. Interestingly, last month was about Rudolph d'Heureuse who took pictures in 1863 along the Mojave Road from Fort Mojave eventually reaching Drum Barracks at Wilmington and this month we will be hearing about the railroad crossing the Mojave Desert, in the same general area, from Needles to Mojave. **Notice the meeting is just a week or so away. The second Thursday comes early this month! We hope you make plans to join us.***

Back in the 1880's and 90's the railroads of the American southwest were playing a game of chess trying to out fox each other for access to the lucrative San Joaquin valley from the east. The Southern Pacific railroad was the master games man at the table and ended up building the railroad between Needles and Mojave that would end up creating that rail line that continues even today.

When that original line was built in our region that rail line took a southerly swing across Rogers dry lakebed from Boron to Mojave. In 1952 that section of the line was abandoned and moved north as the government wanted the lake bed free of those rail operations so they could focus on air operations at Edwards AFB.

In my presentation we will look at that old alignment and the stations that existed along the old right away and take a trip back to the days of railroading on that old, abandoned line.





Please notice: if you are receiving a hardcopy (black and white copy) of this newsletter and would like to enjoy it in color, it is available at our website: www.kahs1959.org.

Negro History Week (1926)

The precursor to Black History Month was created in 1926 in the United States, when historian Carter G. Woodson and the Association for the Study of Negro Life and History (ASNLH) announced the second week of February to be "Negro History Week". This week was chosen because it coincided with the birthday of Abraham Lincoln on February 12 and that of Frederick Douglass on February 14, both of which Black communities had celebrated since the late 19th century. For example, in January 1897, school teacher Mary Church Terrell persuaded the Washington, D.C. school board to set aside the afternoon of Douglass's birthday as Douglass Day to teach about his life and work in the city's segregated public schools. The thought process behind the week was never recorded, but scholars acknowledge two reasons for its birth: recognition and importance. In 1915, Woodson had participated in the Lincoln Jubilee, a celebration of the 50 years since emancipation from slavery held in Bronzeville, Chicago. The summer-long Jubilee, which drew thousands of attendees from across the county to see exhibitions of heritage and culture, impressed Woodson with the need to draw organized focus to the history of black people. He led the founding of the ASNLH in Chicago that fall, toward the end of the Jubilee.

https://en.wikipedia.org/wiki/Black_History_Month



Carter Godwin Woodson 1875-1950

Charles Graves and his family came to Rosamond, California in the late 1800's. Since February is Black History Month, I thought it would be a good time to reprint this story of the Graves family, as seen in the May, 2018 edition of the Antelope Horn.

This article is copied from the KAHS book, Antelope Valley PIONEERS, and tells the story of Charles Graves, an early Rosamond resident, discoverer of gold, postmaster, and supporter of the school system among other things. Charles Graves left quite a legacy in our community and at this time of year with graduations coming up, I'm reminded that the Rosamond High School football field is named in his honor - Graves Field.

Graves Family

By Chris Christopher

Charles Graves was born on February 26, 1856, on a Kentucky plantation, of slave parents, and was one of seven children. His father was killed during the Civil War. Charles was sent to another plantation to live with a cousin. He was not happy there away from his family. When the War was over in April, 1865, which resulted in the preservation of the Union, and the abolition of slavery, President Abraham Lincoln gave an amount of money to each slave. Charles took his money and traveled by walking and 'riding the rails.'

The S.P. train stopped for water and perhaps to leave the mail in the Mojave Desert at a place called Rosamond. Charles got off the train to stretch his legs and to look about. A few unpainted wooden houses lined the dirt roadway. Toward the ring of hills in the distance, he saw "filaree" grass as high as a cow's belly. Shade trees were plentiful. There had to be plenty of water. What a place to raise cattle, Charles thought.

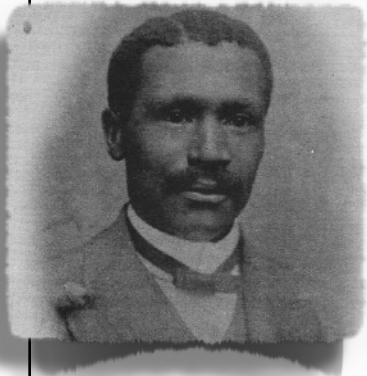
He watched the train go down the track; then turned and walked the dirt road leading to the west, where water bubbled out of the ground from Artesian Wells; and made camp along side a colorful hill.

He filed a Desert Claim on the property which was located aside what we today call Tropico. He built a house, after ordering the lumber from Los Angeles, and had it shipped to Rosamond. He bought a start of a herd of cattle.

One day while herding cattle at the foot of the hills, he saw a rock with streaks of dull yellow. He pocketed it and went on with his work.

Charles knew the "yellow" in the stone was Free Gold. The site became the "Home Gold Mine."

In 1895, September 13, he was appointed Rosamond U.S. Postmaster. There was little mail and being on the go riding horseback, it was no problem to deliver the few letters. With the house completed, he had a good herd of cattle, a job and the gold



Charles Graves



Please notice: if you are receiving a hardcopy (black and white copy) of this newsletter and would like to enjoy it in color, it is available at our website: www.kahs1959.org.

mine. Charles felt he should look for a wife. He placed an advertisement in the newspaper. In 1900, he took the train to Kansas and married Cordia Anita Roberts, a normal school graduate and school teacher.

To them six children were born: Elizabeth, James, Charles, (who lived just one week) Katherine, Robert and Mary.

In the meantime, Charles did more prospecting and discovered more free gold on one of the middle buttes. He homesteaded 160 acres on Rosamond Boulevard which was then a dual rutted dirt road.

A document on display in the Tropico Mine Museum shows the inventory at the time the Postal duties were transferred from Graves to Ella B. Kenton on November 5, 1903.

More people were moving in and with children. Charles and Cordia talked about a school being needed. He contacted Kern County School System and learned a school had to be in operation at least one year before the System could use it.

In 1908, Charles built a one-room school house with an added room for the teacher's living quarters. He hired a teacher and paid her wages for one year. The school house was located on the corner of Rosamond Boulevard and 35th Street. It is reported that Kern County built a school house on the site of the present Rosamond Elementary School in 1920. Pleasant Sutton, who had been the Postmaster between the years of 1888 and 1893, was the first teacher for the new school. Because of the distance only a few children attended. In order to keep the school going, Charles and Cordia sent James to school although he wasn't school age.

Charles built a larger house on the Rosamond Boulevard property in 1912. Robert, Katherine and Mary were born in this house. It still remains today.

Several long-time residents recall Charles riding into town on his horse, usually singing. He made friends with everyone he met, yet he could be stern if need be. Reports are that Cordia was a gentle lady who worked along side her husband to bring growth and betterment into the town. She was a good mother and taught school when a teacher was not available.

Charles life ended on May 7, 1938 while in a Lancaster hospital. Internment was in a Los Angeles cemetery.

After the Rosamond High School was built in 1965 and the football field was completed, dedication ceremonies were held with top dignitaries being present, including Frank Pauly, president of Rosamond Chamber of Commerce and Jess Stockton, superintendent of Kern County Schools. Cordia Anita saw her husband honored posthumously in recognition of his devotion to education and for pioneering Rosamond schools.

Mrs. Graves lived until 1971. Three of the Graves' children are living today. James lives in Prescott, Arizona; Robert and Katherine Graves Paul, yet make their homes in Rosamond.

Settle, Glen A., and Dorene B. Settle. Antelope Valley Pioneers. Kern-Antelope Historical Society, 1991.

Rosamond Grammar School in 1916-1917.

Front row: left is Caroll Webb. Right is Katherine Graves.

Back row, left to right, second is James Graves, then teacher, Mrs. Hawkes, Alice Greenleaf*, Elizabeth Graves and Helen Converse.

**** After high school graduation Alice Greenleaf would marry H. Clifford Burton of the Tropico mine Burtons.***





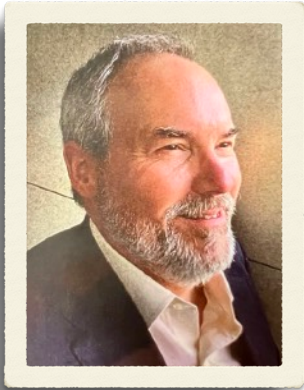
Please notice: if you are receiving a hardcopy (black and white copy) of this newsletter and would like to enjoy it in color, it is available at our website: www.kahs1959.org.

New Member for 2023-2024 - We are very happy to have you join us.

★ Tim Mack

And welcome back to several members who have joined us again.

★ Debi & Terry McVey
★ Reggie & Theresa Graves



We had a wonderful speaker at our January meeting - Jeff Lapides, who brought us an information-filled evening about the early exploration of the Mojave Desert, particularly the photography of Rudolph D'Heureuse. His photos were all but forgotten until Jeff 'discovered' them and brought them back to life in his book, *The Mojave Road in 1863*. Just one of the photographs I found especially interesting was taken at the Quartermaster's department at New San Pedro (later known as Wilmington), with a dromedary and is the only known photograph of any of those animals which were part of the Great Camel Experiment of the U. S. Army. Fort Tejon was one of the army bases where the camels were tried out.

In case you missed it, or just want to enjoy Jeff's presentation again, here is the link: <https://youtu.be/yXYCf0INpvU>

Click on the link below for ALL the KAHS videos!



Check out the KAHS videos which are available on YouTube. Or visit the website for more information about Antelope Valley history. Copies of recent newsletters are available, as well as other information. Follow us on Facebook for reminders about meetings and other items of historical interest. You can always contact us by email.

- ★ Website: www.kahs1959.org
- ★ Facebook: www.facebook.com/KAHS1959/
- ★ Email: info@kahs1959.org

★ KAHS YouTube Videos: <http://kahs1959.org/Videos/videos.html>



Kern Antelope Historical Society - Membership Application

Mail to: Kern Antelope Historical Society; PO Box 1255, Rosamond, CA 93560

	Membership Type	Dues	Amount Paid
Name _____	Student/ Active Military	\$5	_____
Mail Address _____	Individual	\$15	_____
City, ST, Zip _____	Couple	\$20	_____
Phone _____	Family	\$30	_____
Email _____	Business	\$35	_____
Date _____			

Note: • Club Year is June 1st through May 31st of the following year; new members, paying after February 1st, pay only half.
• Zelle: info@kahs1959.org You may now use the following cell number for Zelle payments, also: (661) 609-8757.



Please notice: if you are receiving a hardcopy (black and white copy) of this newsletter and would like to enjoy it in color, it is available at our website: www.kahs1959.org.

The Kern Antelope Historical Society greatly appreciates its business members. We hope you will support them and say thanks when you see them.

Desert Breeze Enterprises

Don and Chavonne Sladek
Owners/Hosts

tel. (661) 256-4409
Rosamond, CA 93560

db2016@icloud.com

Contact us for help with business travel

www.airbnb.com/rooms/5571552



JOHN STICKEL

Expert AUTOMOTIVE, INC.

TAKE YOUR CAR TO THE EXPERTS

(661) 256-0405
FAX (661) 256-2060
2951 DIAMOND ST. ROSAMOND, CA 93560

Do it Best KARLS HARDWARE

2700 Diamond St.
Rosamond CA, 93560
Phone: (661) 256-3985
Fax: (661) 256-3932

Eric Landsgaard
President

kahsbest@sbcglobal.net

MAVERICK'S STEAKHOUSE

661 386-0322

Lic. 955132

melchers construction

QUALITY CONSTRUCTION · REASONABLE RATES · SINCE 1984

Gene R. Melchers
General Contractor

2654 Diamond Street · PO Box 1468 · Rosamond, CA 93560
melchersconst@sbcglobal.net

661-810-0327 · melchersconstruction.net

RAMON'S restaurant
A taste of Mexico

GRACIAS
THE LOPEZ FAMILY

(661) 256-4602
1431 Rosamond Blvd Ste 9 & 10
Rosamond CA 93560

ROBERTO'S MEXICAN FOOD

~Wednesday~
Dinner Buffet from
4pm - 8pm

4401 Rosamond Blvd.
Suite 5 & 6
Rosamond, CA 93560

661.256.2607

Rosamond Chamber of Commerce



Rosamond News

Newspaper · Direct Mail · Web · Email · YouTube

27,000 people
93560

Since 1986

We go to everybody here

2696 Sierra Hwy · P.O. 848 · 93560

SLADE COURT SERVICES
Kern UDA 35 & PS 341

EVICIONS & SERVING
Get Rid of BAD Guys/Gals

15874 SIERRA HWY
MOJAVE, CA 93501
661-342-0213 Michele
prplnut@aol.com
661-824-2578 Chris



THE TIRE STORE

1816 Rosamond Blvd.
Rosamond, CA 93560
(661) 256-TIRE (8473)
Fax (661) 256-8476

PRICES ARE BORN HERE AND RAISED ELSEWHERE

DAVE BRAGG & NICK ROGHAIR
Owners

ESTEBAN MARAVILLAS
Manager

www.tirestoreav.com

For Sale by KAHS

Books - \$11 (*\$8) Each:

Here Roamed the Antelope
Bears - Borax and Gold
Along the Rails from Lancaster to Mojave
The Antelopes Left and the Settle-ers Came
In Love with Life in Lancaster (Hard Times
1927-1932)
Antelope Valley Pioneers
Castles in the Valley - Shea's Castle
A Page in the History of Antelope Valley: the Arthur
Pickus Story: His Home for Seventy Five Years
Mojave, A Rich History of Rails, Mining and Flight
Gold-Fever - 40 Years Digging Antelope Valley
History
Antelope Valley News and Views During Part of the
Great Depression 1925-1935

Video DVD - \$15: Antelope Valley Yesteryears

Maps - \$4 (*\$3): Historic Settlers Circle Map

Online Book: *Glimpse of the Prehistory of Antelope Valley*

**Members' Discount Prices in Parentheses*

2022-2023 Executive Board

Officers:

President: Gretchen Winfrey winfrey3314@yahoo.com
Vice President: Delores Julian ddjulirosa@yahoo.com
Secretary: Janet Winters poppiesrme@gmail.com
Treasurer: Kelly Gonzalez gonzakel@sbcglobal.net

Directors At-Large:

Terry Landsiedel
Judy O'Loughlin
Chavonne Sladek

WEBSITE: www.kahs1959.org **EMAIL:** info@kahs1959.org

General Meetings:

Second Thursday of the Month, September through June
5:30 pm - 3611 Rosamond Blvd, Rosamond, CA
(Exceptions: June, September & December -
Location to be announced)

Memberships:

\$5 - Student & Active Military; \$15 - Individual;
\$20 - Husband & Wife; \$30 - Family; \$35 - Businesses

The Kern Antelope Historical Society was established in 1959 for the purpose of learning and preserving the history of California, especially the Antelope Valley, which includes parts of Los Angeles and Kern counties. Speakers are invited to talk at our monthly meetings about aspects of our various cultures. Subjects range from Indians of the past to the Space Age. The Society offers field trips for members to significant locations in and around the valley throughout the year. Come join us to learn more about the wonders of this area we live in and also meet some new people.

KERN ANTELOPE HISTORICAL SOCIETY
P.O. BOX 1255
ROSAMOND, CA 93560



Since 1959