



Antelope Horn

Newsletter of the Kern-Antelope Historical Society, Inc.
Member of the Conference of California Historical Societies
January, 2024

Meetings:

Regular Meetings:

- 2nd Thursday of the month (except July, August); 5:30 pm.
- Rosamond Public Library -
3611 Rosamond Blvd, Rosamond, CA

Board Meetings:

- 4th Thursday of the month as needed;
4 pm; all are welcome, email for
directions to location.

Hello to all our Kern Antelope Historical Society Members and Friends.

- ❖ **What: Regular Meeting**
- ❖ **When: Thursday, January 11th (2nd Thursday)**
- ❖ **Time: 5:30 pm**
- ❖ **Where: Rosamond Public Library, Rosamond, CA**
- ❖ **Speaker: Jeff Lapidés - editor of *The Mojave Road in 1863***

WEBSITE: www.kahs1959.org **EMAIL:** info@kahs1959.org
FACEBOOK: www.facebook.com/KAHS1959/



The Kern Antelope Historical Society is very excited to have Jeff Lapidés as our guest speaker for the January 11th meeting. Jeff Lapidés is an author and editor from Sierra Madre, who will be talking about his book, PASSAGE TO ELDORADO. Read below to see what he has to say about his very interesting topic - the 'earliest photographs of the American Desert West'. Make plans to attend and bring a friend!

PASSAGE TO ELDORADO

THE EARLIEST PHOTOGRAPHS OF THE AMERICAN DESERT WEST

THE MOJAVE ROAD FROM LOS ANGELES TO THE COLORADO RIVER AND THE GOLD MINES OF ELDORADO CANYON IN 1863



a free presentation BY JEFF LAPIDÉS

GOLD!
SILVER!

...and those seeking their fortunes against the backdrop of the American Civil War, relations among the European-American newcomers, Hispanics, and Native Americans, military exploits, salacious news accounts, greed—and one naturalized German with a camera.

Rudolph d'Heureuse—surveyor, cartographer, civil engineer, mining engineer, oenologist, inventor—who on one momentous journey photographed the Mojave Road in the Desert West from the shores of the Pacific Ocean to the banks of the Colorado River and the mines of Eldorado Canyon in today's Nevada. His subjects included San Bernardino, Cajon Pass, and Los Angeles's seaport, New San Pedro (Wilmington). He did it in 1863, many years before anyone else took the next photo of this desert and its inhabitants, travelers, crossroads, forts, soldiers, and watering holes.

As the very first photographic record of the Mojave Road and its destinations, it calls for a reappraisal of its importance as a convergence of mid-nineteenth century technology, art and commerce. Ansel Adams thought highly enough of Rudolph d'Heureuse's work to include five prints of these images in a 1942 show he curated at the Museum of Modern Art in New York—an exhibit that included the pictures of Brady, O'Sullivan, Curtis, Jackson, Watkins, and other luminaries of photography of the Civil War and the American West.

Jeff Lapidés is a Southern California photographer and book designer residing in Sierra Madre, a village at the foot of the San Gabriel Mountains. He has designed deluxe centennial books for Sierra Madre and San Marino.



Please notice: if you are receiving a hardcopy (black and white copy) of this newsletter and would like to enjoy it in color, it is available at our website: www.kahs1959.org.

The Mojave Road - A Little Background

The Mojave Road, also known as Old Government Road (formerly the Mohave Trail) ran from about where Bullhead City is today to near Barstow. Beginning with the Native Americans, the Mojave Trail ran from watering hole to watering hole through the Mojave Desert. It was an important part of the trade between coastal tribes and those of the desert and even east of Arizona. Probably the first Anglo-American explorer to travel parts of the Mojave trail was Father Francisco Garcés, with the help of his native guides in 1776. Fifty years later, American fur trapper, Jedediah Smith, became the second explorer to record his travels through the area, roughly following the Garcés route. The Mexican government put him in prison a short time for entering Mexico without permission, but then released him and ordered him out of the territory. The following year he returned to the Mojave Trail. This time he and his party were attacked by Mojaves. Smith and eight survivors finally made it to safety. Another explorer who passed this way was young Kit Carson in 1830, traveling with the Ewing Young party.

In the late 1830's the United States sent military explorers throughout much of the west surveying and mapping the area. After the Treaty of Guadalupe Hidalgo in 1848, which ended the Mexican War, whereby California and a large part of the southwest became U.S. territory, the Mojave Trail took on new importance. The United States was looking for the best routes across this new land and a number of surveys were ordered for a "comprehensive and systematic examination of the vast region lying between the Mississippi River and the Pacific Ocean". Besides mapping the area, they collected important information on nature, culture and geography in this part of the west.

The Mojave Road was most important in the 1850's and 1860's after gold was discovered in California. During that time a number of forts were built, especially near vital watering spots, to protect the travelers, traders, and keep lines of communication, open, especially the mail system. Eventually other routes were opened across the Mojave Desert and this historic trail fell into disuse and was more or less forgotten for a number of years.

https://www.smhps.org/archivedpdfs/2018_winter.pdf

<https://www.nps.gov/articles/000/the-mojave-road-the-old-spanish-trail.htm>

The Kern Antelope Historical Society is always looking for people willing to share their family's stories. You may not think so but your story is interesting to many others. Was your family early residents? Did they have a business that many of us have frequented? Do you have some art ability that has made things more interesting here in town or around the valley? Even if your family isn't famous there might be a great story.

Well, here is another angle, shared by Eva Gritz, Admin and Archivist for the Santa Clarita Valley Historical Society. Have you thought about some your possessions that may have historical interest to the community? Maybe something as simple of matchbooks from local businesses, photos (of things such as early school events, community parades, stores or restaurants, horse shows, moviemaking in our area, to name a few) letters and records related to happenings around town, to larger items such as artifacts found in the desert, memorabilia from Edwards AFB, Tropico Mine & Mill, Willow Springs Raceway, etc. What happens to your items when you no longer have them? Are the kids interested in them? Do they know the stories behind the objects? See what Eva Gritz suggested recently in a Facebook post.



"As the Archivist for the SCV Historical Society and an Admin for this page, I BESEECH ALL OF YOU to please name in your will or living trust who is to get your historical items. I am finding so many really special items at estate and garage sales. It's sad really. Most towns and cities have a historical society or local school or college that would love to have your old yearbooks and photos or old matchbooks from restaurants and bars that are no longer in business. Most would love to have almost any memorabilia related to that town or city. (Published newspapers not so much as they are almost all online. but it never hurts to ask.) Also, PLEASE, PLEASE, PLEASE date your photos and include the location and subject matter. If you don't, it's up to researchers to figure it out. Even in these days of technology, it's often difficult to find the correct information. Thank you for giving up 3 minutes of your life to read this."

Eva Gritz, Admin. & Archivist, Santa Clarita Valley Historical Society, egritz@scvhs.org





Please notice: if you are receiving a hardcopy (black and white copy) of this newsletter and would like to enjoy it in color, it is available at our website: www.kahs1959.org.



We had a great time at our annual Christmas dinner which was held at Maverick's this year; originally the old Hamilton Hotel. President Gretchen Winfrey shared some of the history of the building before dinner.



Above, going over last minute details for the Hamilton Hotel presentation.



Dinner attendees seemed to enjoy the historical presentation. And a delicious meal was served, our minds were stretched with a Year-End Trivia quiz based on the newsletters and monthly speakers and the raffle created a lot of excitement. Thanks to all for your participation.



If you were unable to attend, or would just like to watch the "Hotel Hamilton" presentation again, the following link was graciously provided by John Joyce:

<https://www.youtube.com/watch?v=7IPmlb-YHas>.



The Kern Antelope Historical Society would like to thank all who joined us for our annual Christmas dinner and meeting. We appreciate and offer a huge THANKS to all those who purchased raffle tickets to support the organization and to those who donated the wonderful prizes! You all contributed to a most successful evening.

Craig & Pam Roberts - Ghirardelli Sleigh

Delores Julian - Winter Wreath

Kelly Gonzalez - Holiday Décor

The Tire Store - Gift Certificate

Karl's Hardware - \$25 Gift Card

Kathy Nelson - Gift Baskets

Brenda Brandts - Snowmen, Nutcracker & Snow Bottle

Christy Williford - Quilt

Roberto's - \$25 Gift Certificate

Ramon's - 2 Combo Plate Dinners

Judy & Charlie O'Loughlin - Metal Art Sunflower by James Kirk

John & Gayle Joyce - See's Candy

Rae & Janet Winters - Horseshoe Wine Rack

Tom & Char Taylor - 3 Loaves of Banana Bread

Michelle Kirk - Farmer's Wife Gift Certificate

Please notice: if you are receiving a hardcopy (black and white copy) of this newsletter and would like to enjoy it in color, it is available at our website: www.kahs1959.org.



Some Follow-Up Information to the Presentation on the Hamilton Hotel



Hotel Rosamond

So look what we found at the end of the 'chips' aisle in Albertsons' market. At our Christmas meeting someone (sorry, but I didn't hear who) shared that there was a picture, like one Gretchen had in her presentation, in the market and we happened to come across it. At this time, the Hamilton Hotel was going by the name Hotel Rosamond and an upper story had been added to the stone building. Have you noticed the historic photo ?

Movie Made at Mavericks

Since Mavericks (originally the Hamilton Hotel) has been around so long, under a number of different names, there have been many well-known visitors and performers who have been there. And there very well may have been any number of movies filmed there but I came across this bit of information on the internet that was interesting.

"Captain Marvel", filmed in 2019, was shot in a number of different locations, but one part was filmed in Rosamond at the club and dining room now know as Mavericks (then known as the Zebra Club). The character, Vers, is searching for a mysterious woman.

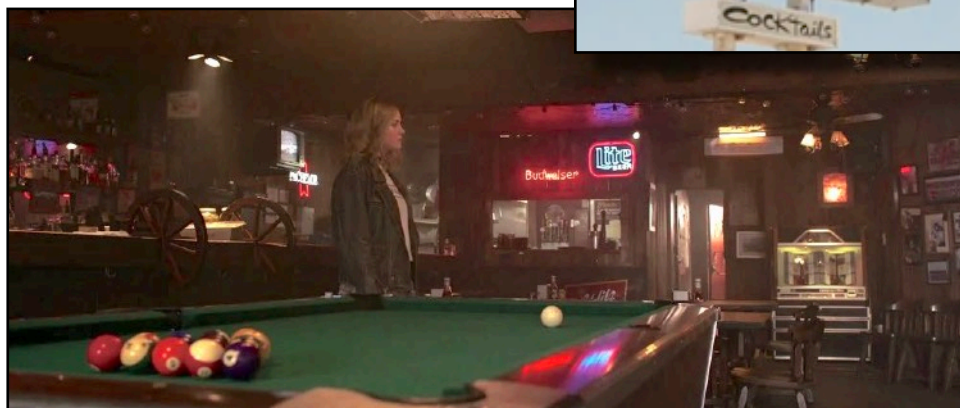
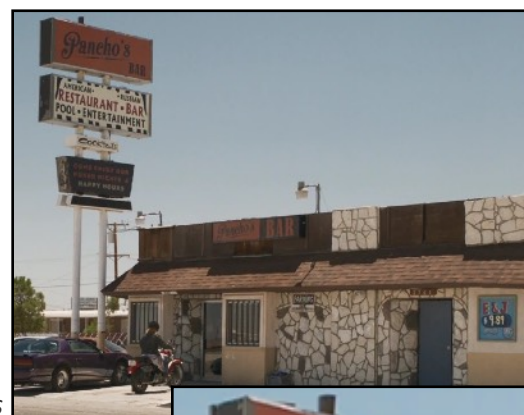
"Her destination is the town of Rosamond, Route 14, about 15 miles north of Lancaster in the Mojave Desert, and 'Pancho's Bar'. Rosamond is real enough but 'Pancho's Bar' is The Zebra Club, 2763 Sierra Hwy, Rosamond, California 93560."

This was given as background for Pancho's Bar in the movie.

"Pancho's Bar was established in 1956 by Pancho Huerta. Carol Danvers used to visit Pancho's Bar along with Maria Rambeau and other United States Air Force pilots. In 1995, Danvers, who was mind-wiped into serving the Kree, crash-landed on Earth. Following her mission of wiping Skrulls from all planets, she gave chase to a Skrull, leading her to a Skrull crystal. She read the information on the crystal with her suit, leading her to Pancho's Bar."

And this bit of trivia was also given.

"The name Pancho's Bar is likely a reference to the aviator Pancho Barnes the her [sic] bar, the Happy Bottom Riding Club, also known as Pancho's Fly Inn. Located near experimental aircraft test site Muroc Army Air Field, the bar and dude ranch was a favorite spot for pilots off the nearby base and was later featured in Tom Wolfe's 1979 book The Right Stuff as well as the 1983 movie of the same name."



https://marvelcinematicuniverse.fandom.com/wiki/Pancho%27s_Bar?file=Carol_Danvers_%281995%29.png



Please notice: if you are receiving a hardcopy (black and white copy) of this newsletter and would like to enjoy it in color, it is available at our website: www.kahs1959.org.



Rawley Duntley Tribute by Ina Scott

Due to technical problems, the Rawley Duntley presentation by Ina Davis Scott at our November meeting had to be redone, with Gretchen Winfrey interviewing Ina. This is a great tribute to Ina’s grandfather, the Barbecue King. Whether you attended the BBQ and meeting or not, you are bound to enjoy this great telling of Lawrence Duntley’s story. Also included is the link to the interview with Rawley Davis and doing the deep pit barbecue, and finally serving it up at the November meeting.

- https://youtu.be/jpTSQ_z2T5g - Ina Scott - “A Tribute to Rawley Duntley”
- https://youtu.be/X5I_8c6tVO8 - Rawley Davis on “Rawley Duntley’s Deep Pit Barbecue”

Click on the link below for ALL the KAHS videos!



Check out the KAHS videos which are available on YouTube. Or visit the website for more information about Antelope Valley history. Copies of recent newsletters are available, as well as other information. Follow us on Facebook for reminders about meetings and other items of historical interest. You can always contact us by email.

- ★ Website: www.kahs1959.org
- ★ Facebook: www.facebook.com/KAHS1959/
- ★ Email: info@kahs1959.org

- ★ KAHS YouTube Videos: <http://kahs1959.org/Videos/videos.html>



Kern Antelope Historical Society - Membership Application

Mail to: Kern Antelope Historical Society; PO Box 1255, Rosamond, CA 93560

	Membership Type	Dues	Amount Paid
Name _____	Student/ Active Military	\$5	_____
Mail Address _____	Individual	\$15	_____
City, ST, Zip _____	Couple	\$20	_____
Phone _____	Family	\$30	_____
Email _____	Business	\$35	_____
Date _____			

Note: • Club Year is June 1st through May 31st of the following year; new members, paying after February 1st, pay only half.
• Zelle: info@kahs1959.org You may now use the following cell number for Zelle payments, also: (661) 609-8757.



Please notice: if you are receiving a hardcopy (black and white copy) of this newsletter and would like to enjoy it in color, it is available at our website: www.kahs1959.org.

The Kern Antelope Historical Society greatly appreciates its business members. We hope you will support them and say thanks when you see them.

Desert Breeze Enterprises

Don and Chavonne Sladek
Owners/Hosts

tel. (661) 256-4409
Rosamond, CA 93560

dbc2016@icloud.com

Contact us for help with business travel

www.airbnb.com/rooms/5571552



JOHN STICKEL

Expert AUTOMOTIVE, INC.

TAKE YOUR CAR TO THE EXPERTS

(661) 256-0405
FAX (661) 256-2060
2951 DIAMOND ST. ROSAMOND, CA 93560

Do it Best KARLS HARDWARE

2700 Diamond St.
Rosamond CA, 93560
Phone: (661) 256-3985
Fax: (661) 256-3932

Eric Landsgaard
President

kahsbest@sbcglobal.net

MAVERICK'S STEAKHOUSE

661 386-0322

Lic. 955132

melchers construction

QUALITY CONSTRUCTION · REASONABLE RATES · SINCE 1984

Gene R. Melchers
General Contractor

2654 Diamond Street · PO Box 1468 · Rosamond, CA 93560
melchersconst@sbcglobal.net

661-810-0327 · melchersconstruction.net

RAMON'S restaurant
A taste of Mexico

GRACIAS
THE LOPEZ FAMILY

(661) 256-4602
1431 Rosamond Blvd Ste 9 & 10
Rosamond CA 93560

ROBERTO'S MEXICAN FOOD

~Wednesday~
Dinner Buffet from
4pm - 8pm

4401 Rosamond Blvd.
Suite 5 & 6
Rosamond, CA 93560

661.256.2607

REC

Rosamond Chamber of Commerce

Rosamond News

Newspaper · Direct Mail · Web · Email · YouTube

27,000 people
93560

Since 1986

We go to everybody here

2696 Sierra Hwy · P.O. 848 · 93560

SLADE COURT SERVICES
Kern UDA 35 & PS 341

EVICIONS & SERVING
Get Rid of BAD Guys/Gals

15874 SIERRA HWY
MOJAVE, CA 93501
661-342-0213 Michele
prplnut@aol.com
661-824-2578 Chris



THE TIRE STORE

1816 Rosamond Blvd.
Rosamond, CA 93560
(661) 256-TIRE (8473)
Fax (661) 256-8476

PRICES ARE BORN HERE AND RAISED ELSEWHERE

DAVE BRAGG & NICK ROGHAIR
Owners

ESTEBAN MARAVILLAS
Manager

www.tirestoreav.com

For Sale by KAHS

Books - \$11 (*\$8) Each:

Here Roamed the Antelope
Bears - Borax and Gold
Along the Rails from Lancaster to Mojave
The Antelopes Left and the Settle-ers Came
In Love with Life in Lancaster (Hard Times
1927-1932)
Antelope Valley Pioneers
Castles in the Valley - Shea's Castle
A Page in the History of Antelope Valley: the Arthur
Pickus Story: His Home for Seventy Five Years
Mojave, A Rich History of Rails, Mining and Flight
Gold-Fever - 40 Years Digging Antelope Valley
History
Antelope Valley News and Views During Part of the
Great Depression 1925-1935

Video DVD - \$15: Antelope Valley Yesteryears

Maps - \$4 (*\$3): Historic Settlers Circle Map

Online Book: *Glimpse of the Prehistory of Antelope Valley*

**Members' Discount Prices in Parentheses*

2022-2023 Executive Board

Officers:

President: Gretchen Winfrey winfrey3314@yahoo.com
Vice President: Delores Julian ddjulirosa@yahoo.com
Secretary: Janet Winters poppiesrme@gmail.com
Treasurer: Kelly Gonzalez gonzakel@sbcglobal.net

Directors At-Large:

Terry Landsiedel
Judy O'Loughlin
Chavonne Sladek

WEBSITE: www.kahs1959.org **EMAIL:** info@kahs1959.org

General Meetings:

Second Thursday of the Month, September through June
5:30 pm - 3611 Rosamond Blvd, Rosamond, CA
(Exceptions: June, September & December -
Location to be announced)

Memberships:

\$5 - Student & Active Military; \$15 - Individual;
\$20 - Husband & Wife; \$30 - Family; \$35 - Businesses

The Kern Antelope Historical Society was established in 1959 for the purpose of learning and preserving the history of California, especially the Antelope Valley, which includes parts of Los Angeles and Kern counties. Speakers are invited to talk at our monthly meetings about aspects of our various cultures. Subjects range from Indians of the past to the Space Age. The Society offers field trips for members to significant locations in and around the valley throughout the year. Come join us to learn more about the wonders of this area we live in and also meet some new people.

KERN ANTELOPE HISTORICAL SOCIETY
P.O. BOX 1255
ROSAMOND, CA 93560



Since 1959