



# Antelope Horn

Newsletter of the Kern-Antelope Historical Society, Inc.  
PO Box 1255 Rosamond, CA 93560  
May, 2018

## Meetings:

### **Regular Meetings:** 2nd

Thursday, monthly (except  
July & August).

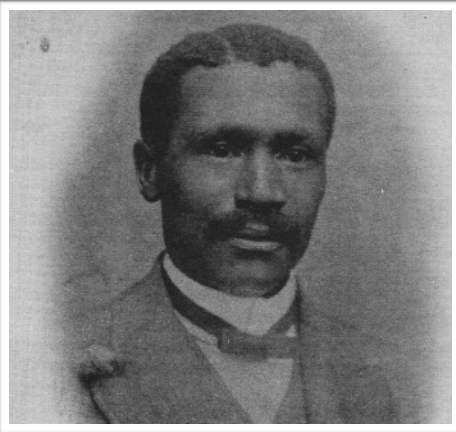
### **Business Session:** 5 pm, at the

Wanda Kirk Library 3611  
Rosamond Blvd.,  
Rosamond, CA. All are  
welcome. Exceptions to  
this location will be  
announced in the newsletter  
and at our website.

**Program:** 5:30 pm, following  
the business session.

## **Coming Up:**

- May - Installation of Officers;  
RHS students and their  
Rosamond History project
- June - Plans are being made to  
visit the Willow Springs  
Saloon again for our June  
Social.



Charles Graves

**May Meeting** - Officers for 2018-19 will be installed at this meeting. We are also very excited to have the **film/phtography students of Mr. Justin Armstrong from Rosamond High School** who have been working on the history of Rosamond for their project. See page 3 for the "flyer" and be sure to invite your friends.

*This article is copied from the KAHS book, Antelope Valley PIONEERS, and tells the story of Charles Graves, an early Rosamond resident, discoverer of gold, postmaster, and supporter of the school system among other things. Charles Graves left quite a legacy in our community and at this time of year with graduations coming up, I'm reminded that the Rosamond High School football field is named in his honor - Graves Field.*

## **Charles Graves Family**

By Chris Christopher

Charles Graves was born on February 26, 1856, on a Kentucky plantation, of slave parents, and was one of seven children. His father was killed during the Civil War. Charles was sent to another plantation to live with a cousin. He was not happy there away from his family. When the War was over in April, 1865, which resulted in the preservation of the Union, and the abolition of slavery, President Abraham Lincoln gave an amount of money to each slave. Charles took his money and traveled by walking and 'riding the rails.'

The S.P. train stopped for water and perhaps to leave the mail in the Mojave Desert at a place called Rosamond. Charles got off the train to stretch his legs and to look about. A few unpainted wooden houses lined the dirt roadway. Toward the ring of hills in the distance, he saw "filaree" grass as high as a cow's belly. Shade trees were plentiful. There had to be plenty of water. What a place to raise cattle, Charles thought.

He watched the train go down the track; then turned and walked the dirt road leading to the west, where water bubbled out of the ground from Artesian Wells; and made camp along side a colorful hill.

He filed a Desert Claim on the property which was located aside what we today call Tropic. He built a house, after ordering the lumber from Los Angeles, and had it shipped to Rosamond. He bought a start of a herd of cattle.

One day while herding cattle at the foot of the hills, he saw a rock with streaks of dull yellow. He pocketed it and went on with his work.

Charles knew the "yellow" in the stone was Free Gold. The site became the "Home Gold Mine."

In 1895, September 13, he was appointed Rosamond U.S. Postmaster. There was little mail and being on the go riding horseback, it was no problem to deliver the few letters. With the house completed, he had a good herd of cattle, a job and the gold mine. Charles felt he should look for a wife. He placed an advertisement in the newspaper. In 1900, he took the train to Kansas and married Cordia Anita Roberts, a normal school graduate and school teacher.



Please notice: if you are receiving a hardcopy (black and white copy) of this newsletter and would like to enjoy it in color, it is available at our website: [www.kahs1959.org](http://www.kahs1959.org).

To them six children were born: Elizabeth, James, Charles, (who lived just one week) Katherine, Robert and Mary.

In the meantime, Charles did more prospecting and discovered more free gold on one of the middle buttes. He homesteaded 160 acres on Rosamond Boulevard which was then a dual rutted dirt road.

A document on display in the Tropic Mine Museum shows the inventory at the time the Postal duties were transferred from Graves to Ella B. Kenton on November 5, 1903.

More people were moving in and with children. Charles and Cordia talked about a school being needed. He contacted Kern County School System and learned a school had to be in operation at least one year before the System could use it.

In 1908, Charles built a one-room school house with an added room for the teacher's living quarters. He hired a teacher and paid her wages for one year. The school house was located on the corner of Rosamond Boulevard and 35<sup>th</sup> Street. It is reported that Kern County built a school house on the site of the present Rosamond Elementary School in 1920. Pleasant Sutton, who had been the Postmaster between the years of 1888 and 1893, was the first teacher for the new school. Because of the distance only a few children attended. In order to keep the school going, Charles and Cordia sent James to school although he wasn't school age.

Charles built a larger house on the Rosamond Boulevard property in 1912. Robert, Katherine and Mary were born in this house. It still remains today.

Several long-time residents recall Charles riding into town on his horse, usually singing. He made friends with everyone he met, yet he could be stern if need be. Reports are that Cordia was a gentle lady who worked along side her husband to bring growth and betterment into the town. She was a good mother and taught school when a teacher was not available.

Charles life ended on May 7, 1938 while in a Lancaster hospital. Internment was in a Los Angeles cemetery.

After the Rosamond High School was built in 1965 and the football field was completed, dedication ceremonies were held with top dignitaries being present, including Frank Pauly, president of Rosamond Chamber of Commerce and Jess Stockton, superintendent of Kern County Schools. Cordia Anita saw her husband honored posthumously in recognition of his devotion to education and for pioneering Rosamond schools.

Mrs. Graves lived until 1971. Three of the Graves' children are living today. James lives in Prescott, Arizona; Robert and Katherine Graves Paul, yet make their homes in Rosamond.

Settle, Glen A., and Dorene B. Settle. *Antelope Valley Pioneers*. Kern-Antelope Historical Society, 1991.

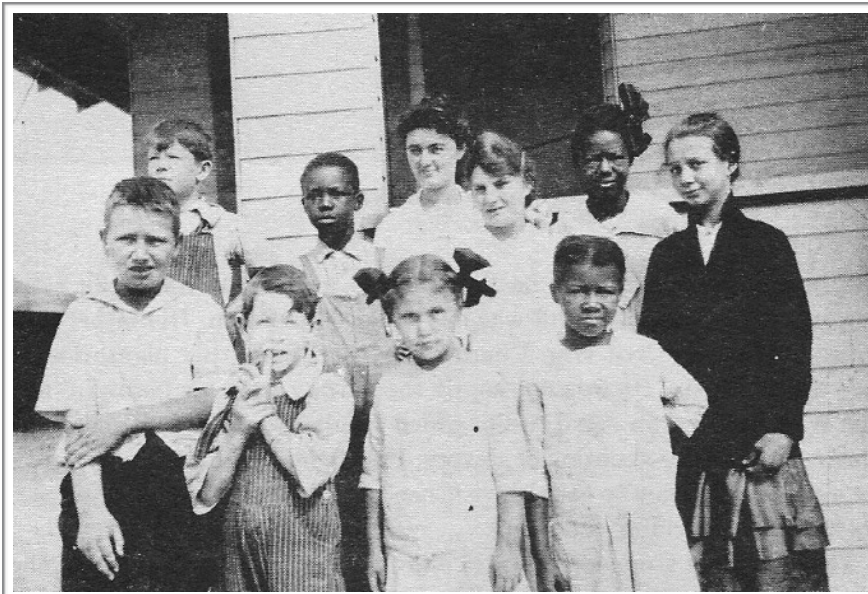
### ***Rosamond Grammar School in 1916-1917.***

*Front row: left is Caroll Webb.*

*Right is Katherine Graves.*

*Back row, left to right, second is James Graves, then teacher, Mrs. Hawkes, Alice Greenleaf\*, Elizabeth Graves and Helen Converse.*

*\* After high school graduation Alice Greenleaf would marry H. Clifford Burton of the Tropic mine Burtons.*





**Kern Antelope Historical Society Meeting**  
**Thursday, May 10, 2018**  
**Rosamond Library**  
**Program starts at 5:30PM**

**Featuring: RHS Film/Photography Students**  
**Showing: The History of Rosamond**  
**Teacher: Justin Armstrong**

*It sounds like these students have been working hard on researching and recording the history of Rosamond. It will be a real treat to hear what they have learned.*

*Be sure to make plans for Thursday, May 10th, and bring your friends!*



(Picture taken at the Gold Mine on Tropic Road and features RHS students who worked on this project.)

**Please join us for this program to support the RHS students who worked on this project and to learn about the history of Rosamond.**

**Cataloging Workday - May 17th**

If you are interested in looking at old things, maybe even *dusty* old things (pictures, documents, artifacts and such) make plans to join us May 17th at Gretchen's Barn. Much of what belongs to the historical society has been stored at Gretchen's and we are not even sure what all is in there. It could be very interesting to say the least. Contact Gretchen for directions - winfrey@qnet.com.

Bring a clipboard if you can, and pen or pencil, maybe some paper.


We will be starting at 9 am., Thursday, May 17th. Hope you can make it.





The Kern Antelope Historical Society greatly appreciates its business members. We hope you will support them and say thanks when you see them.

**JONES AUTOMOTIVE REPAIR**  
 All Smog inspections including gross polluters, test only, star directed and diesel  
**DONALD JONES**  
 Owner  
 2952 B Street  
 Rosamond, CA 93560  
 661-256-4116  
 Fax: 661-256-6386  
 jones0207@sbcglobal.net



**ROBERTO'S MEXICAN FOOD**  
  
 4401 Rosamond Blvd.  
 Suite 5 & 6  
 Rosamond, CA 93560  
**661.256.2607**

  
**RUBEN GONZALEZ**  
 Sales Manager  
**KIEFFE & SONS FORD**  
 18400 Sierra Hwy., Mojave, CA 93501  
 Mojave (661) 824-2477  
 2985 Sierra Hwy., Rosamond, CA 93560  
 Rosamond (661) 256-2811  
 Email: ruben58@yahoo.com  
 FAX (661) 256-2743  
 Cell (661) 713-9718




**PIZZA**  
**JESSE'S PIZZA**  
**Jose Hernandez**  
 Owner  
 "Let us Cater your Next Event with our Delicious Pizzas, Pastas and Fresh Salads"  
 2997 Desert St. #4  
 Rosamond, CA 93560  
**Tel. (661) 256-1313**



**Do it Best**  
**KARLS HARDWARE**  
 2700 Diamond St.  
 Rosamond CA, 93560  
 Phone: (661) 256-3985  
 Fax: (661) 256-3932  
**Eric Landsgaard**  
 President  
 karlsbest@sbcglobal.net

**Tom's Family Restaurant, #28**  
  
 2642 Rosamond Blvd.  
 Rosamond, CA 93560  
**661) 256-7778**

  
**ROSAMOND**  
 Chris Giumarra  
 Owner / Manager  
 1431 West Rosamond Blvd. Rosamond, CA 93560  
 (661) 256 7000 ★ rosamondhealthandfitness.com

**Rosamond Cleaners**  
 professional service  
 home style care  
  
 2650 Diamond  
 Rosamond, CA 93560  
 (661) 256-3787  
**RODAH YOUNG**  
 Owner


**Fosters FREEZE**  
**Hensley/Taylor**  
 Rosamond Fosters Freeze  
 2080 Rosamond Blvd.  
 P.O. Box 624  
 Rosamond, CA 93560  
 (661) 256-4436



**Wayside Cafe**  
 "Where we're all family"  
**David Rodriguez**  
 Owner  
 Tel: 661.256.3437  
 2835 Sierra Hwy.  
 Rosamond, CA 93560  
 5.30am - 8pm Daily  
 waysidecafe.net

  
**LAW OFFICES OF OLAF LANDSGAARD**

**J's Hideaway**  
**Joe & Jen Romero**  
 Owners  
 2635 Diamond St.  
 Rosamond, CA. 93560  
 (661) 256-8583



**Patty's Cafe**  
  
**OPEN**  
 7 Days A Week  
 6AM - 8PM  
 661-206-4395

**Auto Pros II**  
 Smog Checks  
 Complete Domestic & Foreign Automotive Repair  
 Also RV's & Boats  
 1475 Sierra Hwy.  
 Rosamond, CA  
**MARIO GUTIERREZ** (661) 256-2662

**Sister Sister Coffee House**  
 small town. Big Coffee  
 2064 Rosamond Blvd.  
 Rosamond, CA  
 661.256.2140  
 Visit us on Facebook





The Kern Antelope Historical Society greatly appreciates its business members. We hope you will support them and say thanks when you see them.

**Coach's**  
SPORTS BAR & GRILL  
Not your mama's bar Inc.  
Rosamond  
661-256-7563

**THE TIRE STORE**  
1816 Rosamond Blvd.  
Rosamond, CA 93560  
(661) 256-TIRE (8473)  
Fax (661) 256-8476  
PRICES ARE BORN HERE AND RAISED ELSEWHERE  
DAVE BRAGG & NICK ROGHAIR  
Owners  
ESTEBAN MARAVILLAS  
Manager  
www.tirestoreav.com

**Patty Gardner Realty**  
Property Management  
Homes & Apartments  
Michele Slade  
661-342-0213  
Donna Creamer  
661-754-0775  
Office 661-824-2578  
15874 Sierra Hwy.  
Mojave, CA 93501  
South of Carl's Jr.

**EL INDIANO**  
MEXICAN & SEAFOOD  
Rolando Delatorre - Manager  
Encarnacion Delatorre - Asst. Mgr.  
(661) 256-6737  
4001 Knox Avenue  
Rosamond, CA 93560

**melchers construction** Lic. 955132  
QUALITY CONSTRUCTION · REASONABLE RATES · SINCE 1984  
Gene R. Melchers  
General Contractor  
2654 Diamond Street · PO Box 1468 · Rosamond, CA 93560  
melchersconst@sbcglobal.net  
661-810-0327 · melchersconstruction.net

**Century 21**  
Avico-Hometown  
Cathy Gutierrez  
REALTOR®  
BRE# 01276223  
2665 Diamond Street  
Rosamond, CA 93560  
Office (661) 256-2431  
Fax (661) 256-7118  
Call (661) 406-0550  
cathygc21@yahoo.com  
Each Office Is Independently Owned And Operated

**Desert Breeze Enterprises**  
Don and Chavonne Sladek  
Owners/Hosts  
tel. (661) 256-4409  
Rosamond, CA 93560  
dbe2016@icloud.com  
Contact us for help with business travel!  
www.airbnb.com/rooms/5571552

CARPET · LAMINATE · VINYL · WOOD TILE  
"Purchase Green" Artificial Grass Distributor  
**Dick Schoengarth FLOORING**  
Serving You Since 1974  
4401 W Rosamond Blvd.  
(In Skypark Plaza)  
Call Me and Compare!  
661-803-4001

661-342-0213 Kern UDA #35  
Server #415  
**SLADE COURT SERVICES**  
Evictions  
Small Claims  
Process Serving  
Michele Slade

**Century 21**  
Avico-HOMETOWN  
Daniel Landsgaard, MBA  
Top Producing Broker  
BRE: 971627  
2665 Diamond Street,  
Rosamond, California 93560  
Business (661) 256-2431  
Fax (661) 256-7118  
E-mail: Daniel.Landsgaard@gmail.com  
NAHREP

**WILLOWWIND APARTMENTS**  
A Sierra Creek LLC Company  
David Euzarraga  
Project Manager  
714.345.3744 - Dave@sierracreekllc.com  
303 Broadway Street · Unit 204-T · Laguna Beach, CA 92651  
A REAL ESTATE FUTURE-BASED COMPANY  
www.sierracreekllc.com

**RAMON'S restaurant**  
A taste of Mexico  
GRACIAS  
THE LOPEZ FAMILY  
(661) 256-4602  
1431 Rosamond Blvd Ste 9 & 10  
Rosamond CA 93560

**Website: [www.kahs1959.org](http://www.kahs1959.org) Email: [info@kahs1959.org](mailto:info@kahs1959.org)**  
Please visit the website for more information about Antelope Valley history. Copies of recent newsletters are available, as well as other information. The first online KAHS book is now available. *Glimpse of the Prehistory of Antelope Valley*, by Stuart Glennan, is described as "Archaeological Investigations at the Sweetser site". We hope to be able to add other KAHS books in the future.



## For Sale by KAHS

### Books - \$10 Each:

Here Roamed the Antelope  
Bears - Borax and Gold  
Along the Rails from Lancaster to Mojave  
The Antelopes Left and the Settle-ers Came  
In Love with Life in Lancaster (Hard Times  
1927-1932)  
Antelope Valley Pioneers  
Castles in the Valley – Shea’s Castle  
A Page in the History of Antelope Valley: the Arthur  
Pickus Story: His Home for Seventy Five Years  
Mojave, A Rich History of Rails, Mining and Flight  
Gold-Fever - 40 Years Digging Antelope Valley  
History  
Antelope Valley News and Views During Part of the  
Great Depression 1925-1935

**Video DVD - \$15:** Antelope Valley Yesteryears

**Maps - \$4:** Historic Settlers Circle Map

**Online Book:** *Glimpse of the Prehistory of Antelope Valley*

**25% Discount to Members**

## 2017-2018 Executive Board

### Officers:

President: Gretchen Winfrey    winfrey@qnet.com  
Vice President: Delores Julian    ddjulirosa@yahoo.com  
Secretary: Janet Winters    poppiesrme@gmail.com  
Treasurer: Fran Thompson    fthompson3828@sbcglobal.net  
Directors At-Large:  
George Fischer  
Chavonne Sladek  
Kathy Smith

**WEBSITE:** [www.kahs1959.org](http://www.kahs1959.org)    **EMAIL:** [info@kahs1959.org](mailto:info@kahs1959.org)

### General Meetings:

5:00 pm- Business Session, 5:30 pm - Program  
Second Thursday of the Month, September through June  
At Wanda Kirk County Library

3611 Rosamond Blvd. Rosamond, CA 93560

(Exceptions: June, September & December - to be announced)

### Memberships:

\$5 - Student & Military; \$15 - Individual; \$20 - Husband & Wife;  
\$30 - Family; \$35 - Businesses

The Kern Antelope Historical Society was established in 1959 for the purpose of learning and preserving the history of California, especially the Antelope Valley, which includes parts of Los Angeles and Kern counties. Speakers are invited to talk at our monthly meetings about aspects of our various cultures. Subjects range from Indians of the past to the Space Age. The Society offers field trips for members to significant locations in and around the valley throughout the year. Come join us to learn more about the wonders of this area we live in and also meet some new people.

**KERN ANTELOPE HISTORICAL SOCIETY**

**P.O. BOX 1255**

**ROSAMOND, CA 93560**





***Reminder: Elections of Officers at April Meeting***

***The Nominating Committee, headed by Delores Julian, announced the slate of officers to be voted on at the April General Meeting. They are listed here for your consideration, per the KAHS Bylaws.***

President - Gretchen Winfrey,

Directors-at-Large - Chavonne Sladek, Dena

Vice President - Delores Julian

DeCaprio & Richard Guethlein

Secretary - Janet Winters

Treasurer - Jo Kenngott