



# Antelope Horn

Newsletter of the  
Kern-Antelope Historical Society, Inc.  
PO Box 1255 Rosamond, CA 93560

December, 2017

## Meetings:

**Regular Meetings:** 2nd  
Thursday, monthly  
(except July & August).

**Business Session:** 5 pm, at  
the Wanda Kirk Library  
3611 Rosamond Blvd.,  
Rosamond, CA. All are  
welcome. Exceptions to  
this location will be  
announced in the  
newsletter and at our  
website.

**Program:** 5:30 pm, following  
the business session.

## December Christmas Dinner Social: Thursday, December 14th at 5 pm at the Greenhouse Cafe.

You still have time to make your reservations for the  
Christmas dinner at the Greenhouse Cafe. Cost is \$18  
a person for a delicious turkey dinner with all the fixings,  
along with a chance to brush up on some Rosamond  
history.



Payment is due Friday, December 8th. Mail to the Kern Antelope Historical  
Society (see back of newsletter) or hand it to Gretchen, the president, or  
Fran, the treasurer.

The Greenhouse Cafe is located at 1169 Commerce Center Dr. in Lancaster, at  
the west end of the Target Center.



If you've been in the AV long, you will probably recognize Lancaster Blvd. and one of the Christmas parades from long ago. Safeway, Sav-on and California Bank are among the businesses no longer there. Notice the small Christmas tree lot at the left of the photo. And check out the shirt sleeves, it must have been a warm 'summery' day. It was a different era when a market advertised "Open Sundays".



*The following article is from one of our KAHS books available for sale. It is quite interesting, mentioning a lot of things in the Antelope Valley but it would be great to be able to ask the author, (who is unknown) for a lot more 'details' as this recollection raises many questions. Perhaps people in the early 1900's would have recognized a lot of the people and places mentioned and had a more complete understanding of this story. Still it gives us a taste of life in the pioneer days of the Antelope Valley. The story is presented just as written by the author.*

## **THE STORY OF MR. AND MRS. JOHN A. STUCKEY**

**from *Antelope Valley Pioneers*, published by  
Kern Antelope Historical Society, Inc.**

**I came here in 1892 and Mr. Stuckey came in 1888. I came sixteen miles east of here. We went out the Sierra Madre road and settled out by those Buttes. We lived ten miles from Stories or six miles from Butterworth's old mill.**

**They had a school there at that time. Then Wineharts came. Everything is gone there now. There were a lot of stock men out there, and there were seventeen windmills. One family started a little ranch out there. They took up a homestead and couldn't do anything with the land, so they left. Wise people.**

**The cattle ranged out through the Wilsona district. We ranged two hundred cattle at that time. Butterworth and I worked together. The school was on the east side. Wineharts, Freur, and a lot of people came in for a little while. The John Brown colony was started out there. They started after we were here. There were quite a few people there when we came. There were forty at our house party. They located the people down in the flat for a little while. The colony was close to the Wilson & Moore. They didn't have the water to keep them there, though. We had to buy everything by the case, because it would take a whole day to come in to Lancaster. We would get sides of bacon and ham and cans of salmon and corned beef. We also made a lot of jerkey. You cut it, then dip it in hot brine, and hang it on the wash line and dry it in the sun. Sometimes we canned our meat.**

**We packed it in jars and sealed it up tight. The round made the best jerkey. We did this in the summer because you could dry your meat then. The hot brine sears it.**

**I had to drive in by myself. I had a horse and buggy. We lived seven miles out. We lived two years in the Butterworth ranch. Then we lived at Pallets two years. We went up there about 1896. We raised potatoes there. Then we moved down to the brick house and we lived there for six years. We bought that place with a flowing well, one hundred and sixty acres of land and the brick house for \$460.00, and we sold it for \$2000.00 and since then it has been sold for six to eight thousand. We sold out to the Sierra Madre people in 1902.**

**The school house was a cabin that someone had gone away and left. They had good soil out there. It is a sediment soil. I haven't been there for ten years. They pumped all the water out of the Buckhorn Spring. My idea is that there is a basin under it and they pumped all the water out. I bossed at the Spring in 1889, the first winter I came here. We ran pipe in that spring 40 feet. They flowed a stream of water of 25 inches. It was a big stream of water. There were little ponds all around it. There was another spring below it.**

**In the winter time some Tehachapi people brought down from five to seven or eight thousand head of cattle. They ran them all over the Valley They rode them from the Mojave River down through Grape Vine. There were some fields around Elizabeth Lake. We had to go on a round-up. Some days there were cattle on the Mojave River and east of the river in the mountains. Harry Butterworth came in 1890. Up on Kern River**



*Just some thoughts; Who do you think wrote the article? Mrs Stuckey? What was the Sierra Madre Road? Little Lake, Grape Vine, "the brick house" - where are these places today? Do you have any old-timers you could go to who might remember some of these things?. Can you record some history of the Valley? Can you share any history with us?*

## **THE STORY OF MR. AND MRS. JOHN A. STUCKEY, continued.**

there were a lot of cattle around the Kern Springs. In counting those brought down for winter, I would say there were seven or eight thousand head. They had run cattle long before I came here.

Maya Frenchman lived up at Elizabeth Lake. Mrs. Maxwell ran cattle out there. They drove them to Los Angeles. Cattle were cheap when I came here. In the summer of 1889 I took my first bunch of cattle to Los Angeles. I think we had about four hundred head. We took them away down to the city. We fed them on beet tops. We watered our cattle in Los Angeles River by Universal City, then we drove over the hill and there was an old hotel and saloon where the railroad tracks are on the right side of Hollywood Hill. Then we stopped to get a drink and drive down to Hollywood Hill and guard the cattle for the night. Down there they didn't seem to raise anything but a little celery, hay, and few oranges.

When I first came here there were quite a few antelope out west. Near Indian Water there was a band of sixty antelopes. It is at the foot of the red-brown mountain east of Rosamond by Dry Lake. Then there was another band out around Muroc. I guess there were 75 or 80 in that bunch. Hitte bought a bunch of cattle off of Frakes and he had five tame antelope there. We had to keep the door shut to keep the antelope out, or they would eat the paper off the wall. They were as gentle as dogs. Frakes would catch them as little things. There were quite a few antelope out at the west end. The people killed them off. They used to kill them off for the hides and sell them. They ran in the

mountains in the summer time and when it snowed into the mountains they came down into the valley.

The cattle watering places were Willow Springs, a spring north of Rosamond (3 or 4 miles) they used to call it Fredrick Springs, Indian water three miles east of Rosamond, Love Joy Springs and another spring west of Fairmont. Duharts still have cattle out at Fairmont. Munzes, Ritters, and the Roof brothers still have cattle.

Butterworth came in about 1889-90 and took up a homestead then he bought some land at Buck Horn. Butterworth bought his own cattle. He started with about 270 head. He made quite a bit of money. His wife had a lot of money. He sold out to the Sierra Madre people. We sold about 987 head, then I went about 16 miles north of Barstow.

The farmers and cattle raisers had quite a bit of trouble. They had to keep their cattle out and they started fencing their farms. Along about 1895-96 they started taking the cattle out of the west end. Harry used to run cattle north of Fairmont about 9 miles.

There were Indians when I came here. They used to come down in back of Muroc and hunt Antelope. I guess there would be 25 or 30. They camped along Little Lake. They had some holes they would fill up when the rains came along. Then there were some that would come down to work. They were peaceful, and very quiet.

A fellow out at the Buttes subdivided and he had put up a sign with George Town on it. He went back to Chicago and sold a lot of land back there, and one man came out inquiring for George Town, and nobody knew where it was.

Date written is unknown



*“John Stuckey built this early Rosamond building before 1900. It was Rosamond’s first store, hotel and post office. It is now located at the foot of Tropic Mine.”*

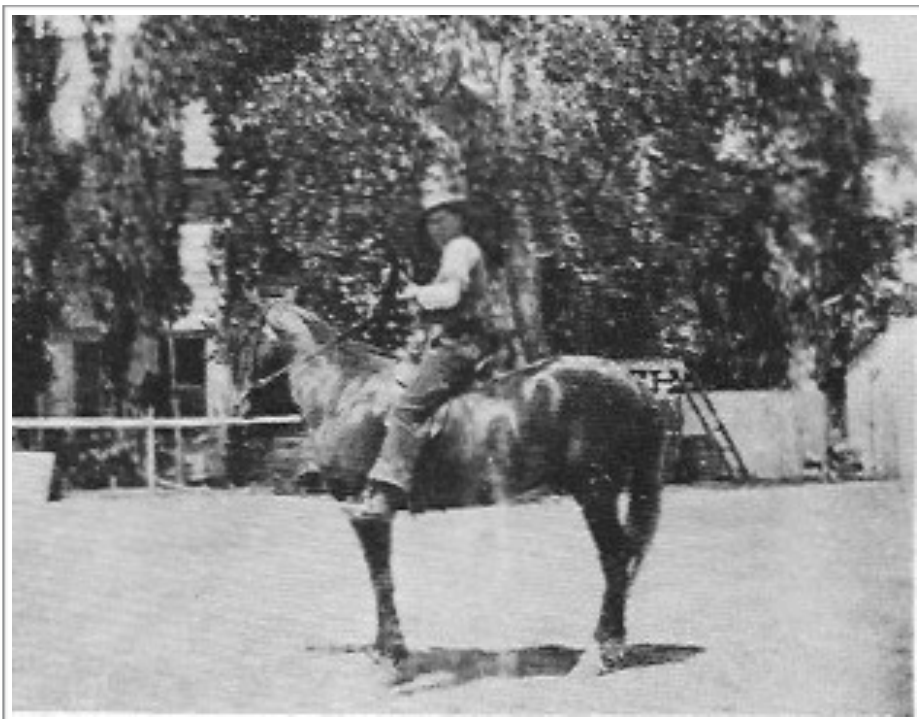
**Antelope Valley Pioneers**

*Ella Kenton and her brother George lived in the Stuckey Bldg. after it’s commercial use, followed by Mr. & Mrs. Rawley Duntley. It was moved to Tropic in the 60’s.*

**scvhistory.com**



*Ella Kinton, the first postmistress in Rosamond, is in the black dress (center) and to her left is her uncle, John Stuckey, with the white beard.*



*“John Stuckey on horse in front of the Lancaster Western Hotel”*  
**Antelope Valley Pioneers**



The Kern Antelope Historical Society has lost one of its long-time members. We are saddened to announce that Greta Castle passed away October 22. She was a member forty years or more and served on the Board of Directors at times. Her support of the organization and her friendship will be greatly missed.

### **New Members for 2018 - Welcome to KAHS:**

<i>Cindy Austin</i>	<i>Steve Genger</i>	<i>Thom Johnson</i>	<i>Yolanda Sanchez</i>
<i>Shannon Clark</i>	<i>Shirley Gilmore</i>	<i>Alinda Lord</i>	<i>Randy &amp; Terry Scott</i>
<i>Leslie De Santiago</i>	<i>Graves-Gregg Family</i>	<i>Russell McKee</i>	<i>Chris Spicher</i>
<i>Dena DeVeau</i>	<i>George &amp; Mary Green</i>	<i>Therese &amp; Ralph Melbar</i>	<i>Ivy Vasquez</i>
<i>Brenda Deveau</i>	<i>Michael Grewe</i>	<i>Inga Nagel</i>	
<i>Eunice Eisebraun</i>	<i>Rick Guthlein</i>	<i>Danny Reeves</i>	
<i>Jodi Feinstein</i>	<i>Sherrie Harris</i>	<i>Eugenia Jo Regan</i>	
<i>Betty Flores</i>	<i>Linda Ingram</i>	<i>Jayne Ridgway</i>	

### **New Business Members for 2018 - Thanks for your support of KAHS:**

<i>Auto Pros II</i>	<i>Patty Gardner Realty</i>	<i>Slade Court Services</i>
<i>Century 21 / Daniel Landsgaard</i>	<i>Patty's Café</i>	<i>Tom's Famous #28</i>
<i>J's Hideaway</i>	<i>Ramon's</i>	<i>Willow Wind Apartments</i>

### **Special Area Event this Saturday, December 2 - Holidays on the Homestead**

If you don't have plans this weekend, you might want to check out this event at the [Antelope Valley Indian Museum](#) from 5 - 8 pm Saturday night. This is the seventh annual celebration of *Holidays on the Homestead*. Originally a 1930's homestead, the historic grounds will be decorated in vintage holiday style and feature live acoustic music around a campfire, a chili cook-off, tours of the grounds, a country craft boutique, real cowboy coffee brewed over the fire, and hot chocolate or cider for the kids! Explore the unique hand-built museum and whimsical grounds at night, with soft lighting and the smell of fresh greenery, and the wintery sky sparkling over the desert. Special music around the campfire from cowboy-singer Michael Tcherkassky, "The Saddle Serenader". Cost is \$10 for adults and \$5 for ages 6-12 yrs. **For more information go to <http://www.avim.parks.ca.gov/>**



The Kern Antelope Historical Society greatly appreciates its business members.

We hope you will support them and say thanks when you see them.

**JONES AUTOMOTIVE REPAIR**

All Smog inspections including gross polluters, test only, star directed and diesel


**DONALD JONES**  
Owner

2952 B Street  
Rosamond, CA 93560

661-256-4116  
Fax: 661-256-6386  
jones6207@abcglobal.net



**ROBERTO'S MEXICAN FOOD**



4401 Rosamond Blvd.  
Suite 5 & 6  
Rosamond, CA 93560

**661.256.2607**



**RUBEN GONZALEZ**  
Sales Manager

**KIEFFE & SONS FORD**  
19400 Sierra Hwy., Mojave, CA 93501  
Mojave (661) 824-2477  
2985 Sierra Hwy., Rosamond, CA 93560  
Rosamond (661) 256-2811  
Email: ruben58@yahoo.com  
FAX (661) 256-2743  
Cell (661) 713-9718



**FAST & FRESH PIZZA**

**JESSE'S PIZZA**

Jose Hernandez  
Owner

"Let us Cater your Next Event with our Delicious Pizzas, Pastas and Fresh Salads"

2997 Desert St. #4  
Rosamond, CA 93560

Tel: (661) 256-1313



**Do it Best**

**KARLS HARDWARE**

2700 Diamond St.  
Rosamond CA, 93560  
Phone: (661) 256-3985  
Fax: (661) 256-3932

**Eric Landsgaard**  
President

karlsbest@sbcglobal.net

**Tom's Family Restaurant, #28**



2642 Rosamond Blvd.  
Rosamond, CA 93560

**661) 256-7778**

**HEALTH & FITNESS**


**ROSAMOND**

Chris Giumarra  
Owner / Manager

1431 West Rosamond Blvd. Rosamond, CA 93560  
(661) 256 7000 ★ rosamondhealthandfitness.com



**Rosamond Cleaners**  
professional service  
home style care




2650 Diamond  
Rosamond, CA 93560  
(661) 256-3787

**RODAH YOUNG**  
Owner

**Fosters FREEZE**

**Hensley/Taylor**

Rosamond Fosters Freeze  
2080 Rosamond Blvd.  
P.O. Box 624  
Rosamond, CA 93560  
(661) 256-4436



**Wayside Cafe**

"Where we're all family"

**David Rodriguez**  
Owner

Tel: 661.256.3437  
2835 Sierra Hwy.  
Rosamond, CA 93560  
5.30am - 8pm Daily  
waysidecafe.net




**LAW OFFICES OF OLAF LANDSGAARD**

**J's Hideaway**

Joe & Jen Romero  
Owners

2635 Diamond St.  
Rosamond, CA 93560

(661) 256-6563



**Patty's Cafe**

**OPEN**  
7 Days A Week  
6AM - 8PM  
661-206-4395



**Auto Pros II**

Smog Checks  
Complete Domestic & Foreign Automotive Repair  
Also RV's & Boats  
1475 Sierra Hwy.  
Rosamond, CA

**MARIO GUTIERREZ** (661) 256-2662

**Sister Sister Coffee House**

small town. Big Coffee

2064 Rosamond Blvd.  
Rosamond, CA  
661.256.2140

Visit us on Facebook





The Kern Antelope Historical Society greatly appreciates its business members.

We hope you will support them and say thanks when you see them.

**Coach's**  
SPORTS BAR & GRILLE  
Not your mama's bar Inc.  
Rosamond  
661-256-7563

**THE TIRE STORE**  
1816 Rosamond Blvd.  
Rosamond, CA 93560  
(661) 256-TIRE (8473)  
Fax (661) 256-8476

PRICES ARE BORN HERE AND RAISED ELSEWHERE

DAVE BRAGG & NICK ROGHAIR  
Owners  
ESTEBAN MARAVILLAS  
Manager  
www.tirestoreav.com

**Patty Gardner Realty**  
Property Management  
Homes & Apartments  
Michele Slade  
661-342-0213  
Donna Creamer  
661-754-0775  
Office 661-824-2578  
15874 Sierra Hwy.  
Mojave, CA 93501  
South of Carl's Jr.

**EL INDIANO**  
MEXICAN & SEAFOOD

Rolando Delatorre - Manager  
Encarnacion Delatorre - Asst. Mgr.

(661) 256-6737  
4001 Knox Avenue  
Rosamond, CA 93560

**melchers construction** Lic. 955132  
QUALITY CONSTRUCTION · REASONABLE RATES · SINCE 1984

**Gene R. Melchers**  
General Contractor

2654 Diamond Street · PO Box 1468 · Rosamond, CA 93560  
melchersconst@sbcglobal.net

661-810-0327 · melchersconstruction.net

**Century 21**  
Avico-Hometown

Cathy Gutierrez  
REALTOR®  
BRE# 01276223

2665 Diamond Street  
Rosamond, CA 93560  
Office (661) 256-2431  
Fax (661) 256-7118  
Cell (661) 406-0550  
cathygc21@yahoo.com

**Desert Breeze Enterprises**

Don and Chavonne Sladek  
Owners/Hosts

tel. (661) 256-4409  
Rosamond, CA 93560  
dbe2016@icloud.com

Contact us for help with business travel!  
www.airbnb.com/rooms/5571552

CARPET · LAMINATE · VINYL · WOOD TILE  
"Purchase Green" Artificial Grass Distributor

**Dick Schoengarth**  
FLOORING

Serving You Since 1974

4401 W Rosamond Blvd.  
(In Skypark Plaza)

Call Me and Compare!  
661-803-4001

661-342-0213 Kern UDA #35  
Server #415

**SLADE COURT SERVICES**  
Evictions  
Small Claims  
Process Serving  
Michele Slade

**Century 21**  
Avico-HOMETOWN

Daniel Landsgaard, MBA  
Top Producing Broker  
BRE: 971627

2665 Diamond Street,  
Rosamond, California 93560  
Business (661) 256-2431  
Fax (661) 256-7118  
E-mail: Daniel.Landsgaard@gmail.com

**WILLOWWIND APARTMENTS**  
A Sierra Creek LLC Company

David Euzarraga  
Project Manager

714.345.3744 - Dave@sierracreekllc.com  
303 Broadway Street - Unit 204-1 - Laguna Beach, CA 92651  
A REAL ESTATE FUTURE-BASED COMPANY  
www.sierracreekllc.com

**RAMON'S restaurant**  
A taste of Mexico

GRACIAS  
THE LOPEZ FAMILY

(661) 256-4602  
1431 Rosamond Blvd Ste 9 & 10  
Rosamond CA 93560

Website: [www.kahs1959.org](http://www.kahs1959.org)

Email: [info@kahs1959.org](mailto:info@kahs1959.org)

Please visit the website for more information about Antelope Valley history. Copies of recent newsletters are available, as well as other information. The first online KAHS book is now available. *Glimpse of the Prehistory of Antelope Valley*, by Stuart Glennan, is described as "Archaeological Investigations at the Sweetser site". We hope to be able to add other KAHS books in the future.



### For Sale by KAHS

#### Books - \$10 Each:

1. Here Roamed the Antelope
2. Bears - Borax and Gold
3. Along the Rails from Lancaster to Mojave
4. The Antelopes Left and the Settle-ers Came
5. In Love with Life in Lancaster (Hard Times 1927-1932)
6. Antelope Valley Pioneers
7. Castles in the Valley – Shea’s Castle
8. A Page in the History of Antelope Valley: the Arthur Pickus Story: His Home for Seventy Five Years
9. Mojave, A Rich History of Rails, Mining and Flight
11. Gold-Fever - 40 Years Digging Antelope Valley History
12. Antelope Valley News and Views During Part of the Great Depression 1925-1935

Video DVD - \$15: Antelope Valley Yesteryears

Maps - \$4: Historic Settlers Circle Map  
**25% Discount to Members**

### 2017-2018

#### Executive Board

#### Officers:

President: Gretchen Winfrey      winfrey@qnet.com  
 Vice President: Delores Julian      ddjulirosa@yahoo.com  
 Secretary: Janet Winters      poppiesrme@gmail.com  
 Treasurer: Fran Thompson      fthompson3828@sbcglobal.net

#### Directors At-Large:

George Fischer  
 Chavonne Sladek  
 Kathy Smith

**WEBSITE: [www.kahs1959.org](http://www.kahs1959.org) EMAIL: [info@kahs1959.org](mailto:info@kahs1959.org)**

#### General Meetings:

5:00 pm- Business Session, 5:30 pm - Program  
 Second Thursday of the Month, September through June  
 At Wanda Kirk County Library

3611 Rosamond Blvd. Rosamond, CA 93560

(Exceptions: June, September & December - to be announced)

#### Memberships:

\$5 - Student & Military; \$15 - Individual; \$20 - Husband & Wife;  
 \$30 - Family; \$35 - Businesses

The Kern Antelope Historical Society was established in 1959 for the purpose of learning and preserving the history of California, especially the Antelope Valley, which includes parts of Los Angeles and Kern counties. Speakers are invited to talk at our monthly meetings about aspects of our various cultures. Subjects range from Indians of the past to the Space Age. The Society offers field trips for members to significant locations in and around the valley throughout the year. Come join us to learn more about the wonders of this area we live in and also meet some new people.

### KERN ANTELOPE HISTORICAL SOCIETY

P.O. BOX 1255

ROSAMOND, CA 93560

